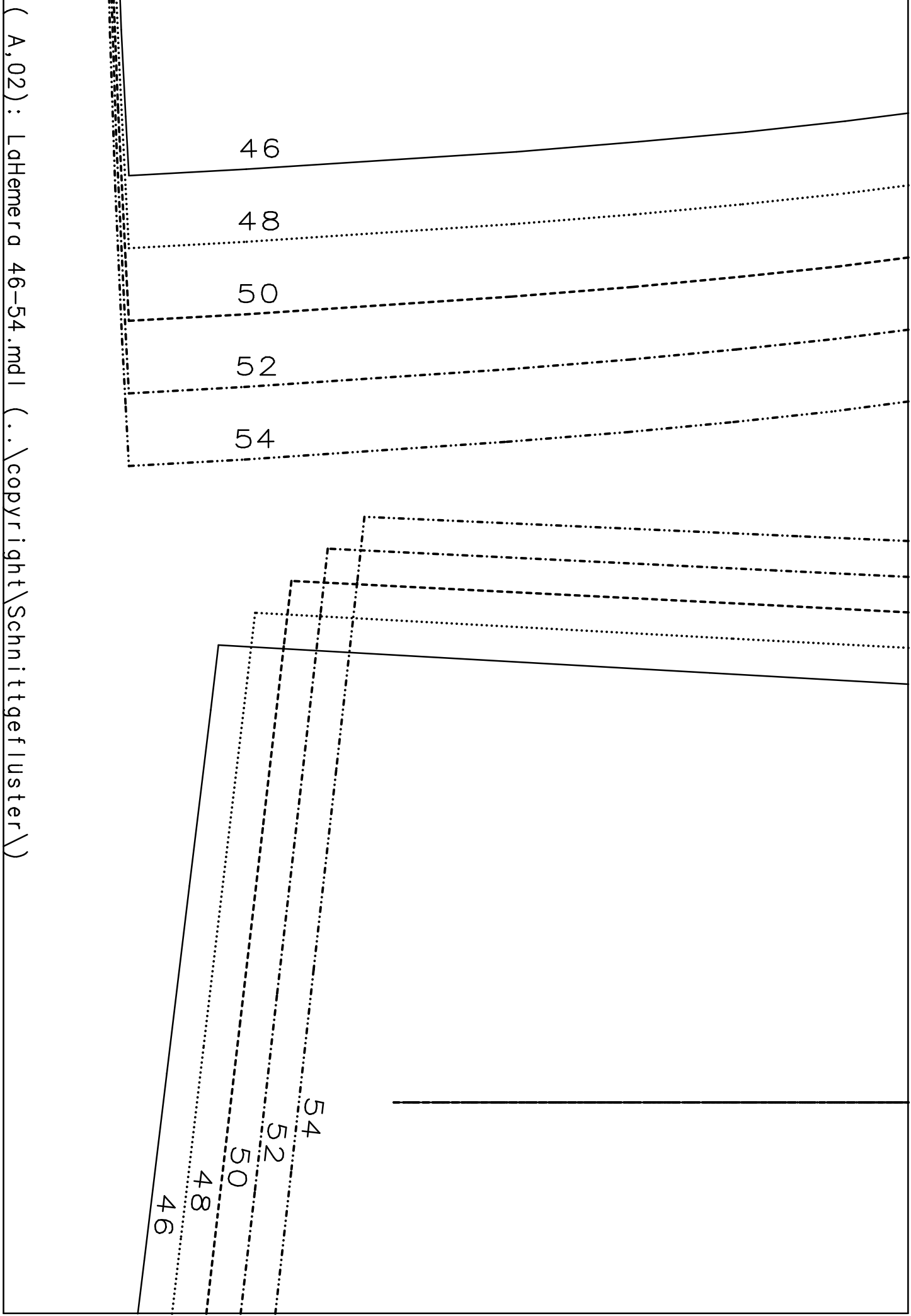
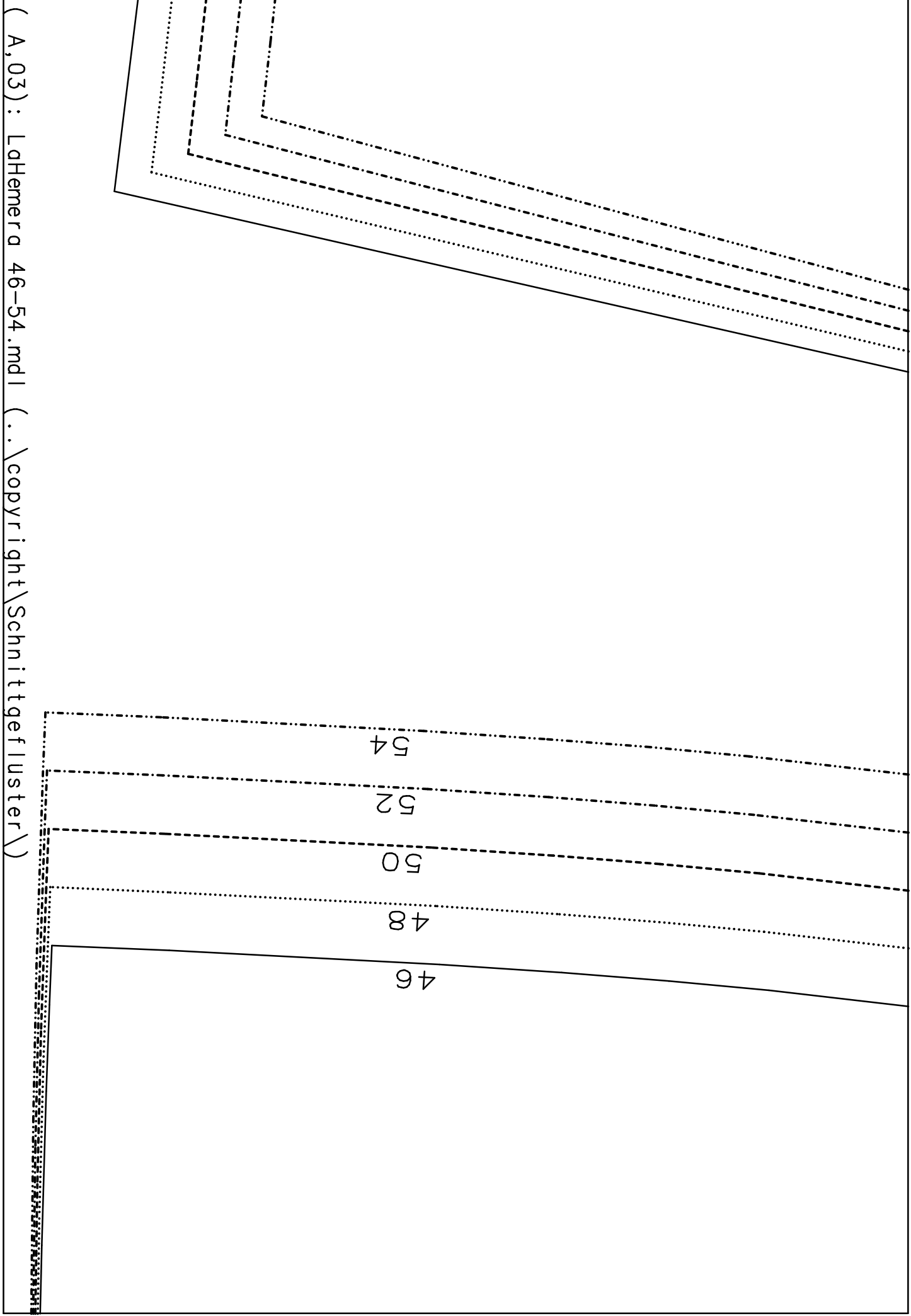


(A,01) : LaHemera 46-54.mdl (..\copyright\Schnittgefuster\)



(A, 02) : LaHemera 46-54.mdl (. . \copyright\Schnittgef.luster)



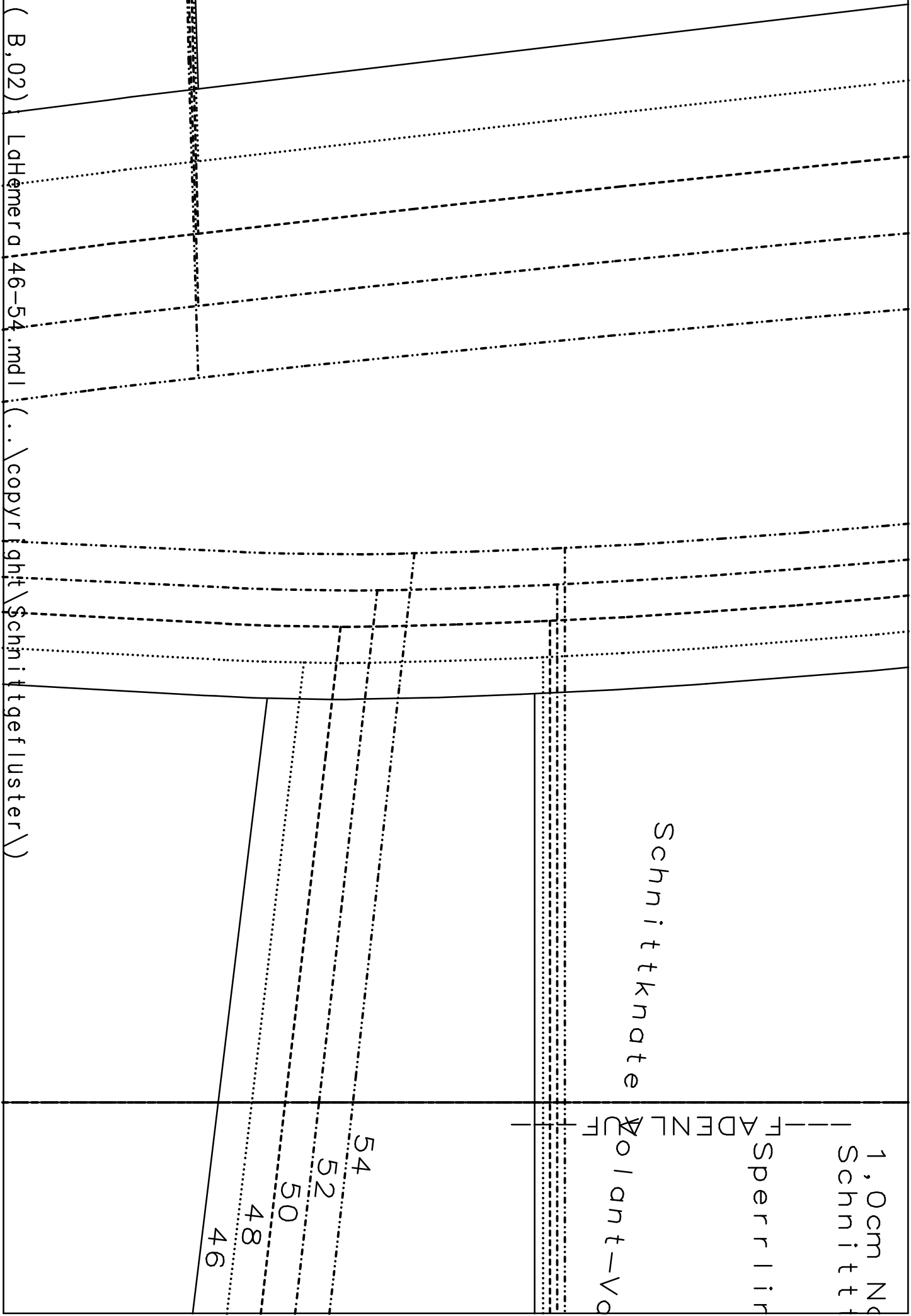
(A,03) : LaHemera 46-54.mdl (..\copyright\Schnittgef\uster\)

(A, 04) : LaHemera 46-54.mdl (..\copyright\Schnittgef luster)

---FADENL AUF---

Schnittkante Blazer

(B,01) : LaHemera 46-54.mdl (..\copyright\Schnittgefuster\)



1,0cm Naht
Schnitt-

Sperrlinie

Schnittkante

Fadenlinie
Volant-Vo

54

52

50

48

46

(B, 02)

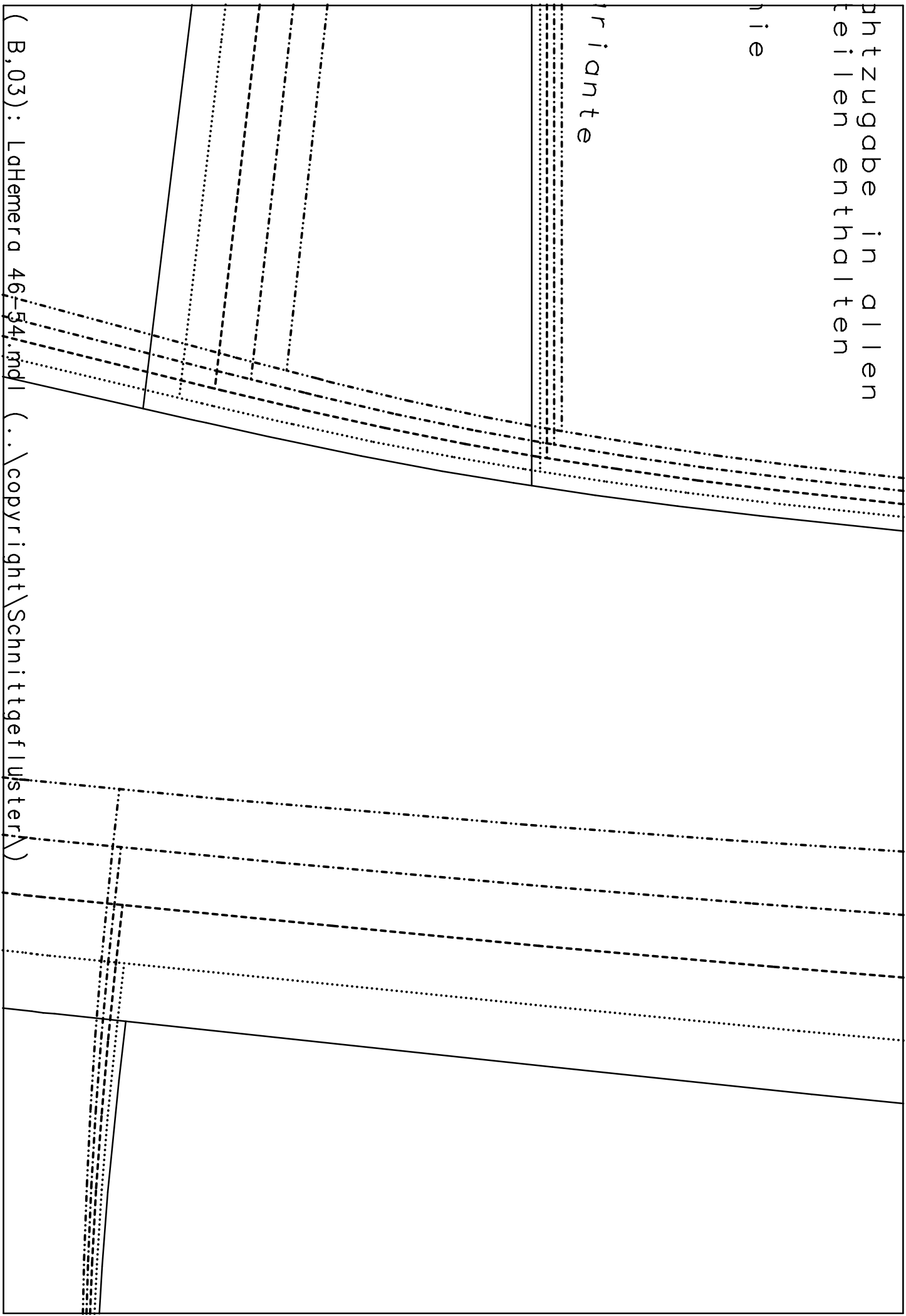
LaHemera 46-54.mdl

(. . \copyr\ght\Schnittgef.luster\)

phitzugabe in allen
teilen enthalten

nie

riante



(B,03) : LaHemera 46-54.mdi

(..\copyright\Schnittgef\uster\

---FADENLAUF-Bruch---

Schnittkante Blazer

(B,04) : LaHemera 46-54.mdl (..\copyright\Schnittgefuster\)

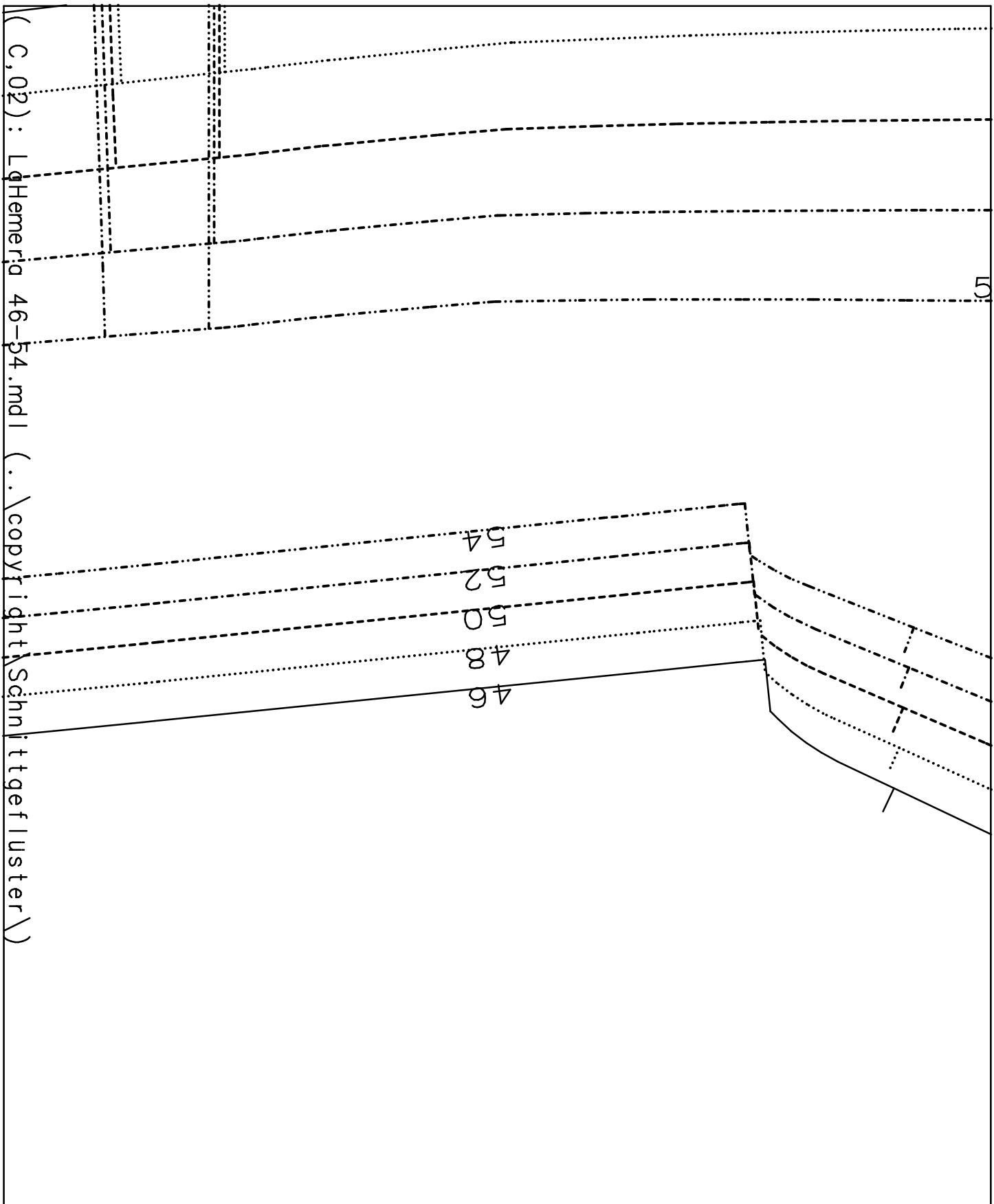
Vorderteil

LaHemera 32-54
(c) Schnittgeflluster

1,0cm Nahtzugabe in allen
Schnittteilen enthalten

Sperrlinie

Schnittkante Kurzjacke



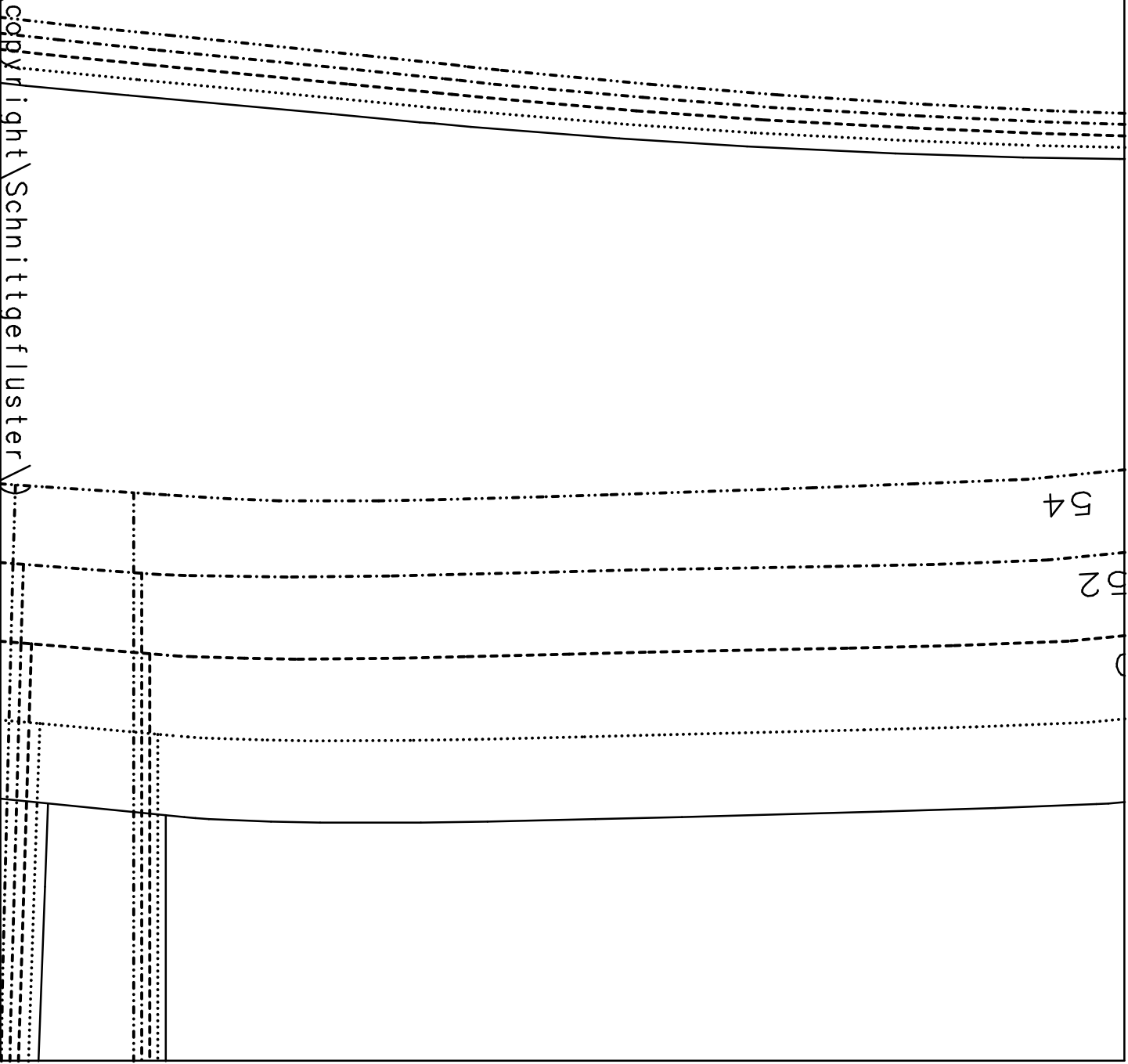
(C, 02) : LqHemeria 46-54.mdl (..\copyright\Schnittgefluster)

F U
O b
L a H e
(c) S e

ITER
erdarmel

amera 32-54
chnittgefuster

(C,03): LaHamera 46-54.mdl (..\cddp\right\Schnittgefuster\)



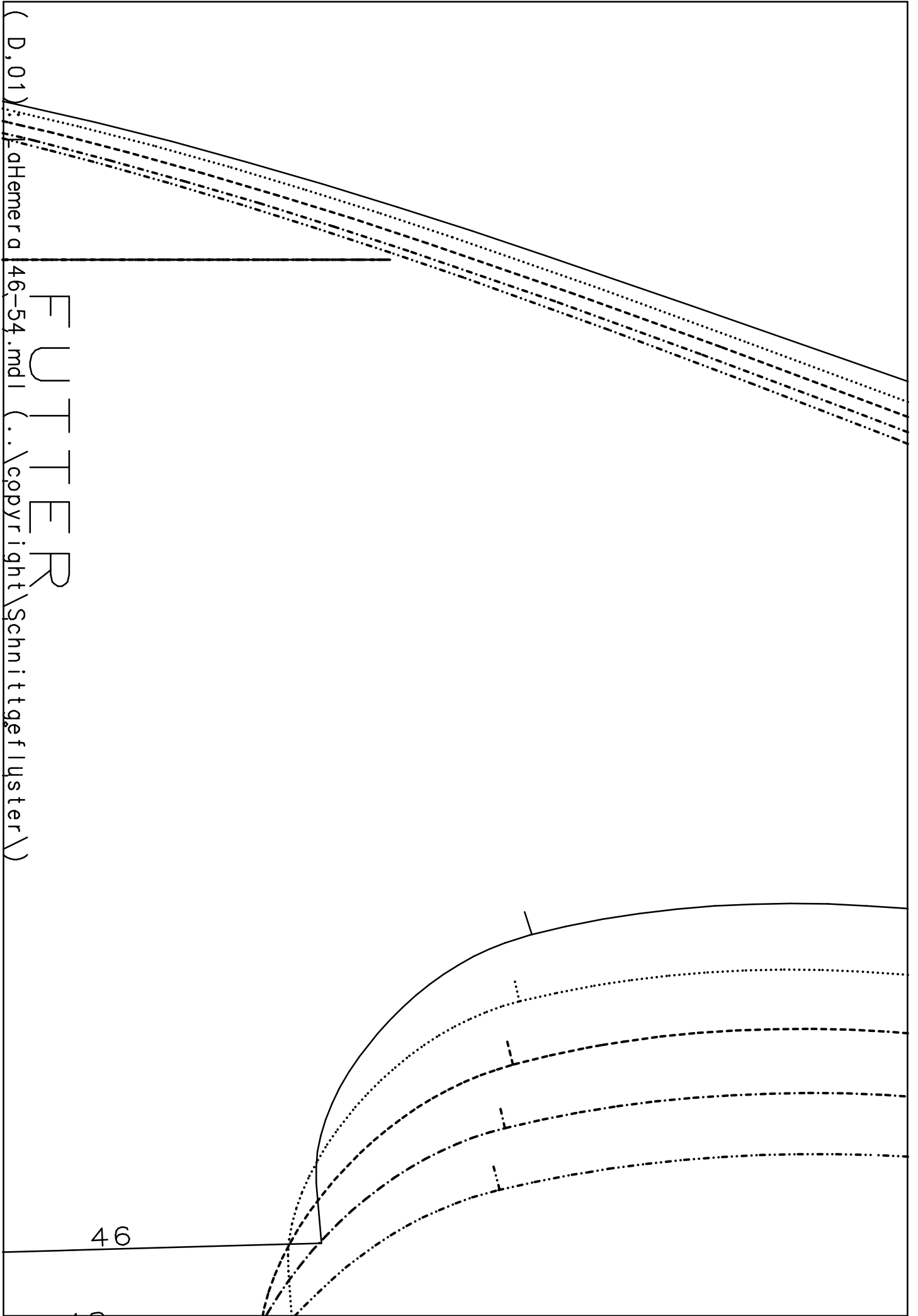
FUTTER RUCKENTEIL

LaHemera 32-54
(c) Schnittgefuster

1,0cm Nahtzugabe in allen
Schnittteilen enthalten

Sperrlinie

Schnittkante Kurzjacke

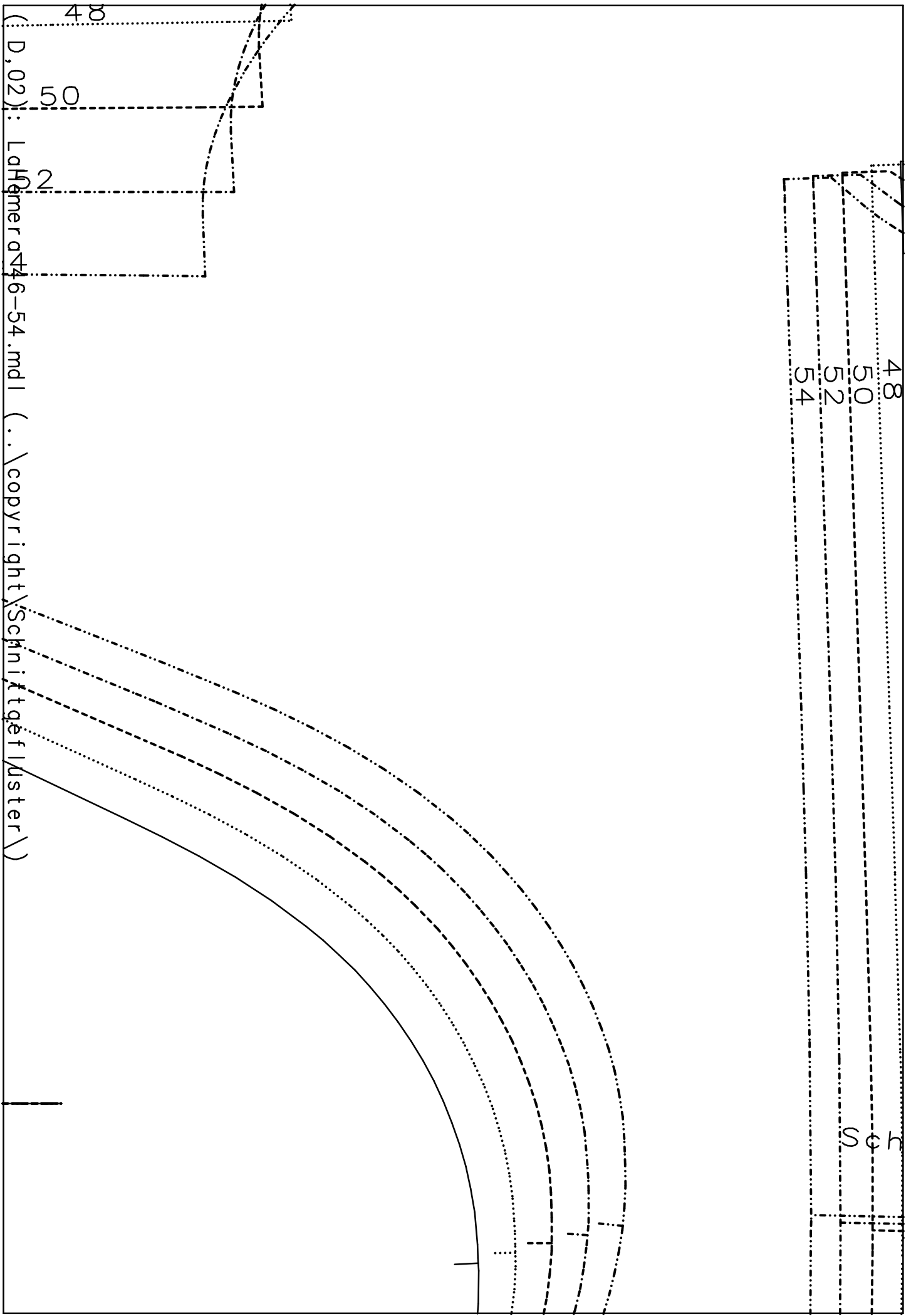


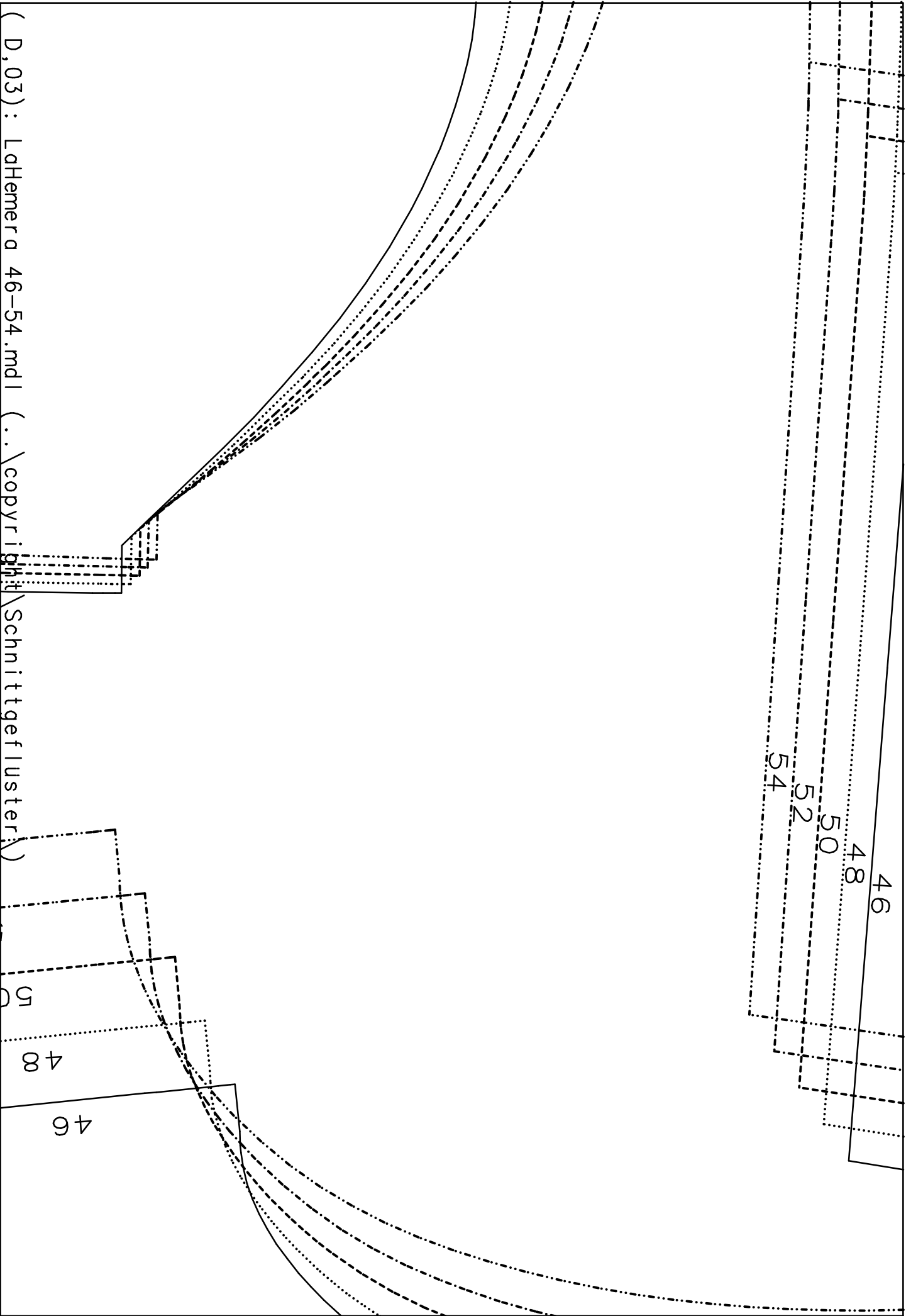
(D, 01)
aHemera

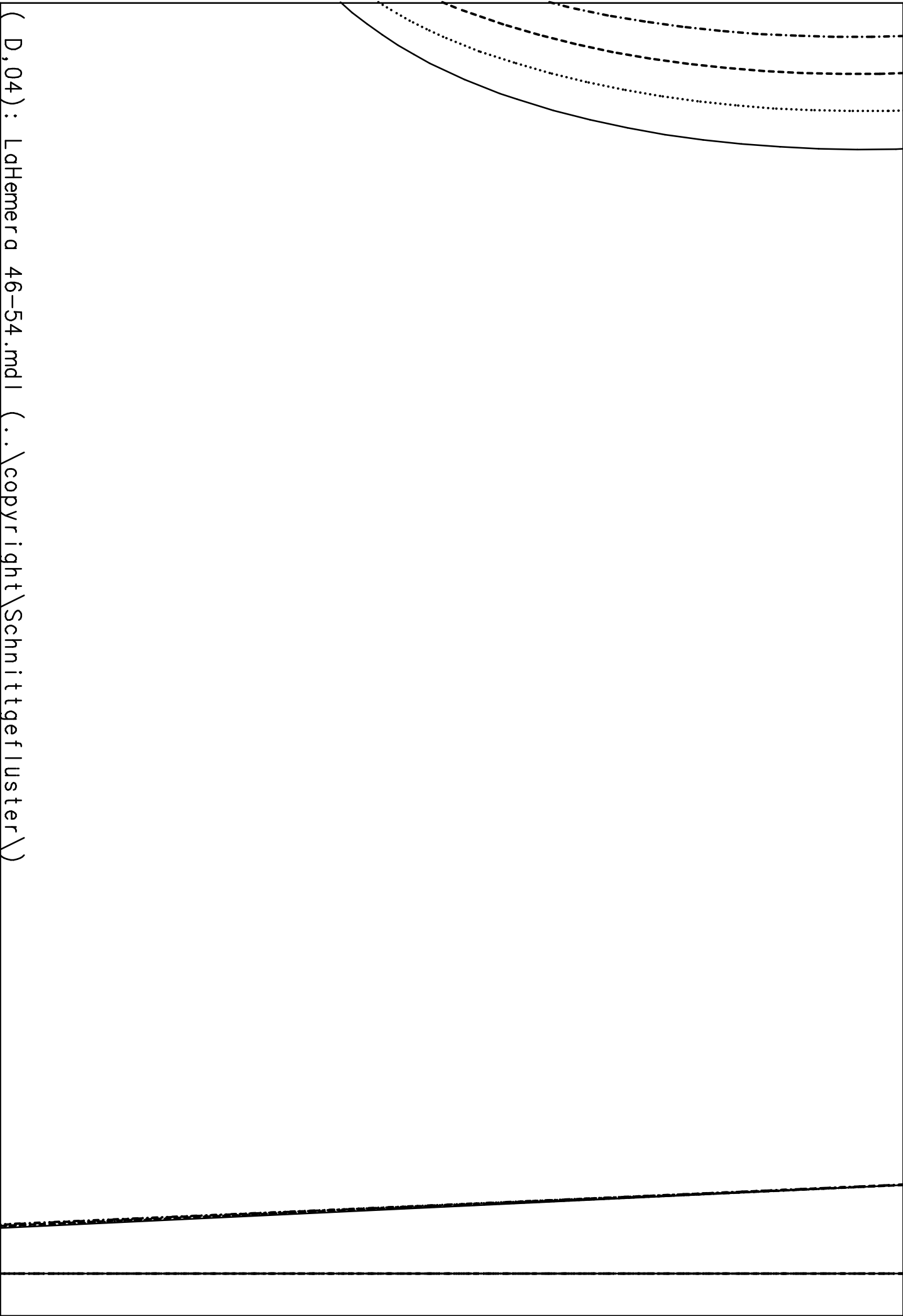
46-54.mdl (..\copyright\Schnittgefluster)

46

FUTTER



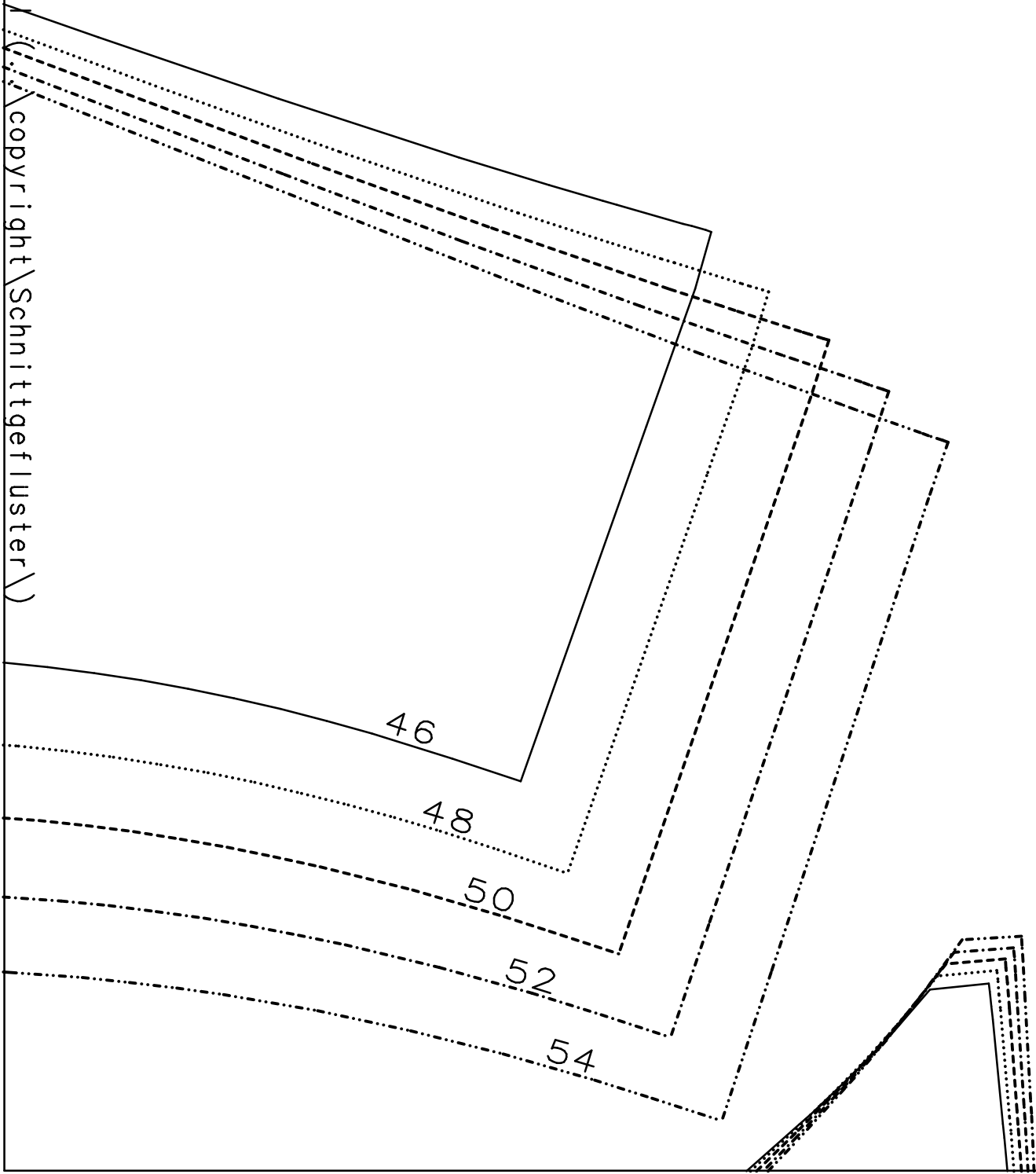


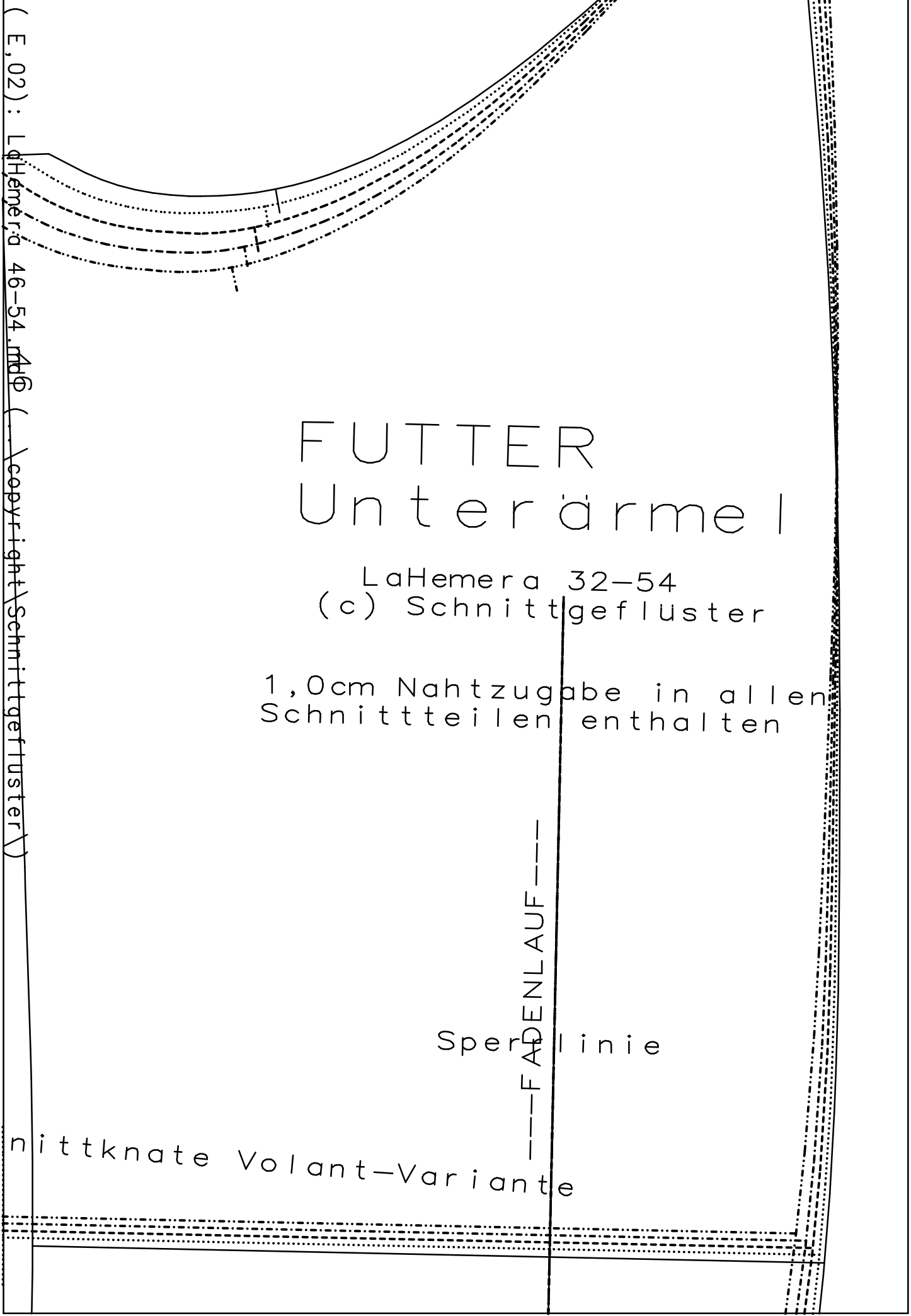


(D, 04) : LaHemera 46-54.mdl (..\copyright\Schnittgefluster)

(E, 01) : LaHemera 46-54 .md

(\copyright \Schnittgef\uster)





(E, 02) : LaHemera 46-54 .pdf
Copyright Schnittgefuster)

FUTTER Unterärme I

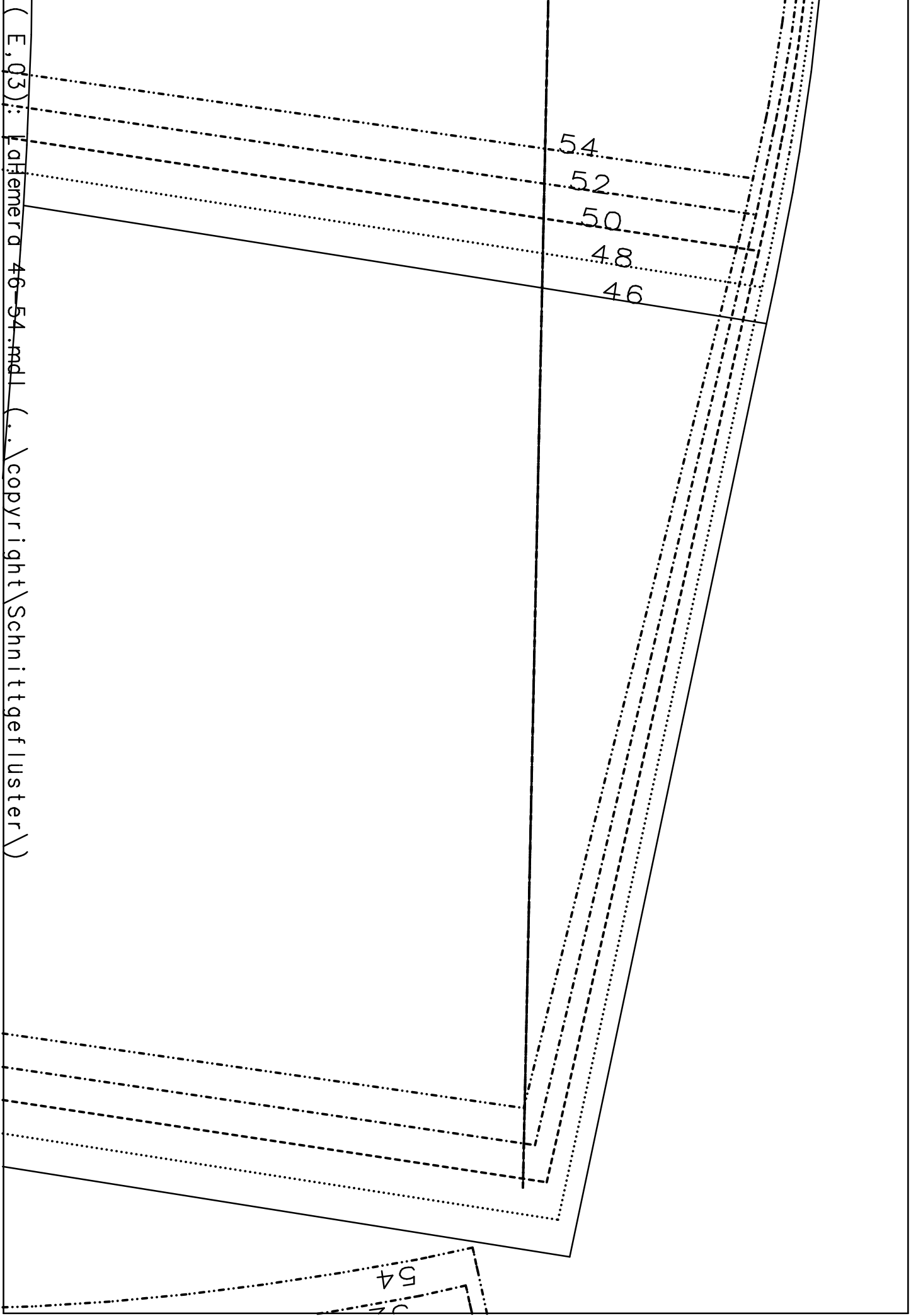
LaHemera 32-54
(c) Schnittgefuster

1,0cm Nahtzugabe in allen
Schnittteilen enthalten

FADENLAUF

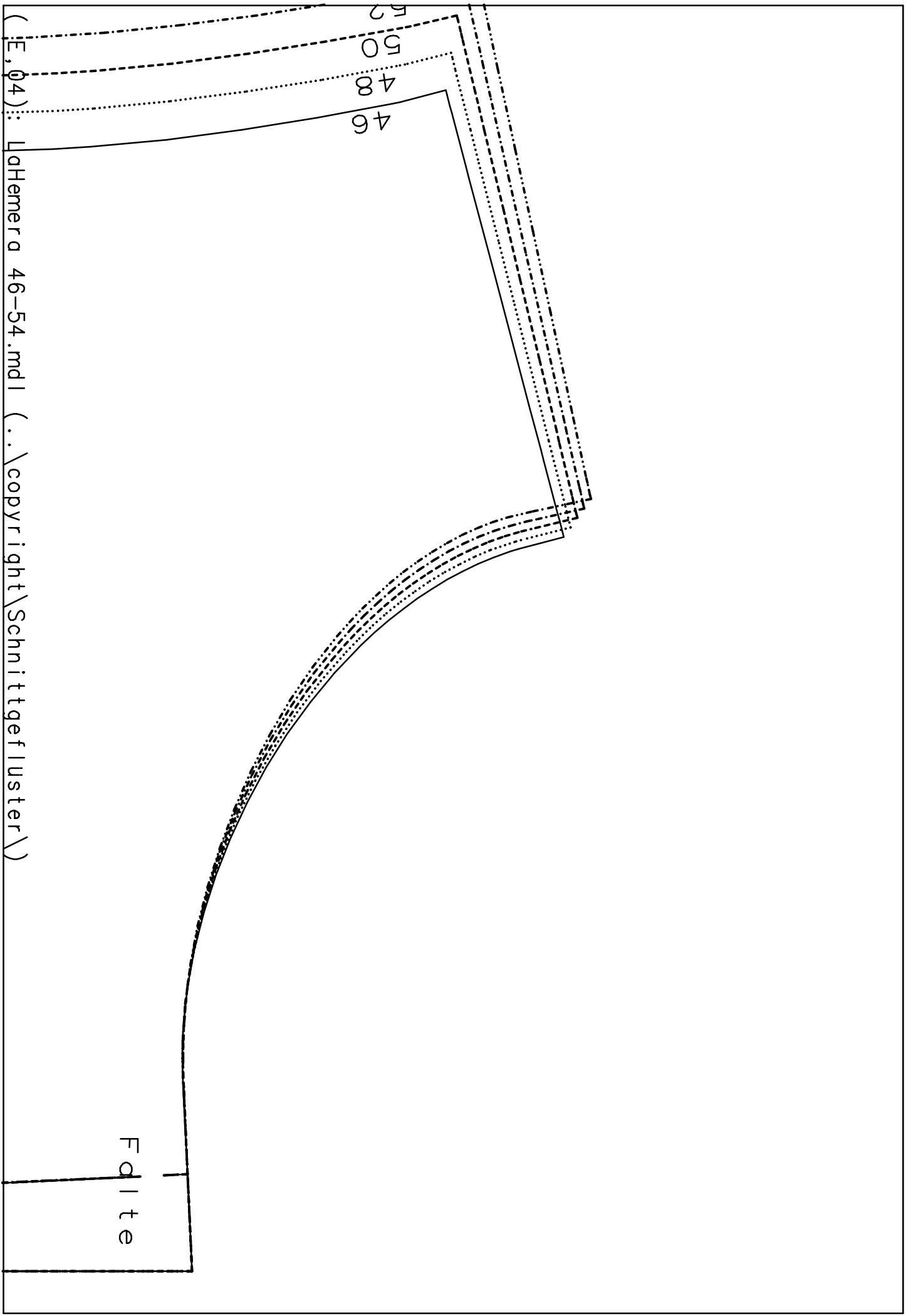
Sperrelinie

mittelnate Volant-Variante



(E, q3): | a | H e m e r a 4 6 - 5 4 . m d l (. . \ c o p y r i g h t \ S c h n i t t g e f l u s t e r \)

54



(E, 04): LaHemera 46-54.mdl (..\copyright\Schnittgefuster\)

F d i t e